

T'port

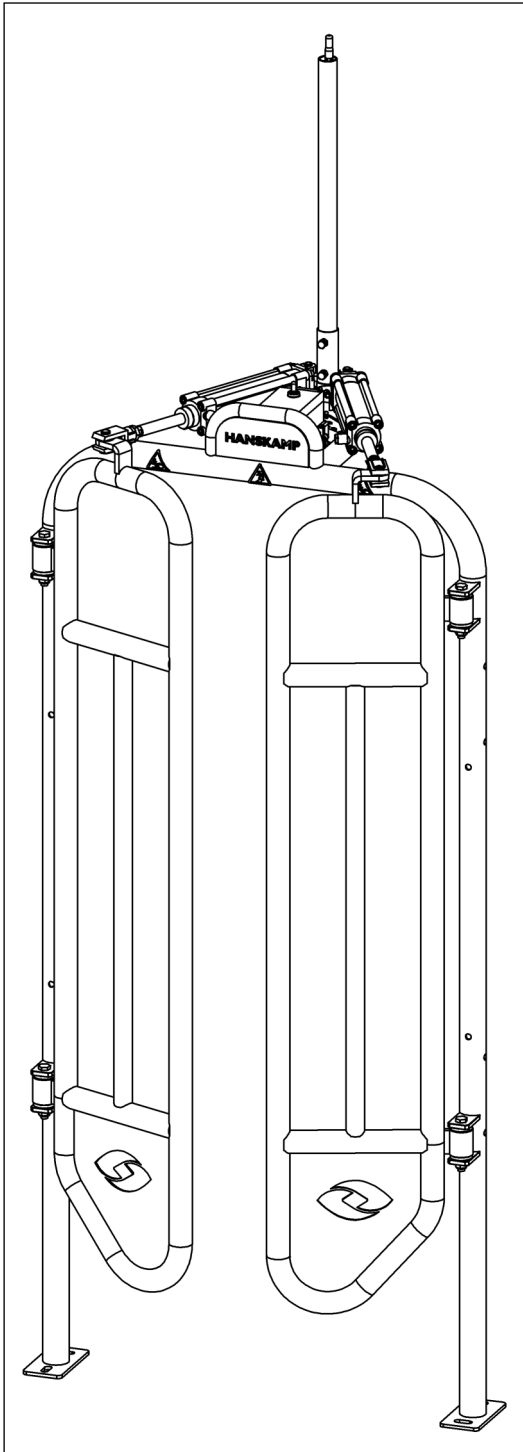
004-330-001

Toegangspoort

Entrance gate

Zutritt Tor

Porte d'accès automatique



Installation and Operating Instructions

EN



HANSKAMP

Innovation for dairy farming

Article number: 010-259-000

Date: December 2025

Version 1.5 - Translation of original Installation and Operating Instructions
According to Annex 1 Section 1.7.4 of the Machinery Directive 2006/42/EC

Wehl,
The Netherlands
www.hanskamp.com

Foreword

Contents of the installation and operating instruction

This manual contains the information necessary for the correct installation and operation of a Hanskamp T'port. Study and understand this information thoroughly before configuration of the T'port. Failure to do so could result in damage to equipment. Please consult your milking equipment dealer if you do not understand the information in this manual, or if you need additional information.

All information in this manual has been compiled with care. Hanskamp shall not be liable for errors or faults in this manual. The recommendations are meant to serve as guidelines. All instructions, pictures and specifications in this manual are based on the latest information that was available at the time of publication. Your T'port may comprise improvements, features or options that are not covered in this manual.

Applicability

The table below shows the type numbers of the T'port for which this manual is applicable.

Model designation 004-330-000 series

Model	Type number
T'port back for FS-WI	004-330-001
T'port back Spider for FS-WI	004-330-101
T'port back, on the back of FS-WT, without control	004-330-301
T'port front FeedStation walk-through	004-330-002
T'port front Spider FS-WT	004-330-102
T'port front CowToilet FS-WT	004-330-202

Contact number of milking technology dealer

We recommend that you enter the name, phone number and e-mail of your milking technology dealer in the table below, so that you can always find the right information easily.

Name	
Address	
Phone number	
E-mail	

1. Introduction

Hanskamp's T'port is a pneumatically driven gate that closes the entrance to the feed station. Because the station is safely closed off, the feeding cow is protected from other cows bumping into it. The T'port closing gate guarantees that every cow is able to consume its concentrate in peace, providing certainty that the right cow is receiving the concentrate. The T'port closing gate is easy to install behind every type of feed station. The feed station may require an extension.

The information in this manual is aimed at dairy farmers and technicians.

- Dairy farmers use the information to test and adjust the T'port.
- Technicians use the information to install and set up the T'port.

2. Safety

2.1 Introduction

The 'Safety Warning' symbol warns about important safety messages on your T'port and in the manual. Use caution if you see this symbol; it means there is a risk of personal injury or death. Follow the directions of any safety messages.



Safety Warning Symbol

2.2 Warning texts

Note the use of the warnings **CAUTION** and **DANGER** in the safety messages. The following guidelines apply to these warnings:



Caution! Indicates a potentially hazardous situation which could result in minor personal injury or damage to equipment or the environment if the warning is ignored.



Danger! Indicates a potentially hazardous situation which could result in death or serious injury if ignored.

2.3 Safety Instructions

You are personally responsible for operating and maintaining your T'port safely. You must make sure that you and anyone else who operates the equipment, performs maintenance on the T'port or works in the vicinity of the T'port, are familiar with all the safety information in this manual.

Safety is in your hands. Proper safety measures protect you and the people around you. Incorporate these measures into your safety programme. Make sure that everyone who uses, carries out maintenance, or works in the vicinity of the T'port is aware of these safety measures. Do not risk injury or death by ignoring the safety precautions.

- T'port owners must train users before the T'port is used. This training must be repeated at least once a year.
- The user must read, understand and follow all the safety and operating instructions in the manual.
- Anybody who has not read and understood all the safety and operating instructions must not operate the T'port.
- Do not make any modifications to the equipment. Unauthorised modifications may affect operation, affect the service life of the equipment, and/or result in personal injury.
- Only use original spare parts, and make sure that they are fitted by authorised technicians.

2.3.1 General safety

- Make sure that you have read and understood the manual and the safety instructions before connecting the power supply to operate or adjust the T'port, or turning it off for maintenance.
- Only trained personnel may operate the T'port.
- Install all guards and safety devices before using the T'port.
- Wear proper protective clothing and equipment.
- Before cleaning the T'port or performing maintenance on it, switch off the power supply of the T'port by removing the plug from the socket. Also be sure that the compressed air supply is depressurised.
- Make sure that phone numbers of emergency medical care available in your area are at hand.
- If you have any other questions, please contact your milking technology dealer.
- Review all safety-related topics with all users at least once a year.

2.3.2 Electrical safety

- Only a qualified electrician may install the T'port power supply.
- Check whether the earthing of the electrical system and all parts of the T'port comply with local rules and regulations.
- Replace any damaged electrical cables, cable sheaths, switches and parts immediately.
- Isolate or switch off the power supply before opening the T'port and working on the electrical system.

2.3.3 Safety during installation

- Make sure that you have read and understood the instructions in this manual.
- Check whether the T'port has been installed correctly, as described in the manual.

2.3.4 Safe operation

- Make sure that you have read and understood the manual and the safety instructions before connecting the power supply to operate or adjust the T'port, or turning it off for maintenance.
- Before cleaning the T'port or performing maintenance on it, switch off the power supply of the T'port by removing the plug from the socket. Be sure that the compressed air supply is depressurised, switch the compressor off by using the main switch of the compressor, and close the air valve.
- Install the lid and other safety devices before using the T'port.
- Keep hands, feet, hair and clothing away from live parts.
- Keep all unauthorised persons, especially small children, away from the T'port at all times.
- Before connecting the T'port to the power supply, make sure that all parts are properly tightened and that all cables and mountings are in good condition.
- If you have any other questions, please contact your milking technology dealer.

2.3.5 Maintenance safety

- Make sure that you have read and understood the manual and the safety instructions before connecting the power supply to operate or adjust the T'port, or turning it off for maintenance.
- Only trained personnel may service and maintain the T'port.
- Before cleaning the T'port or performing maintenance on it, switch off the power supply of the T'port by removing the plug from the socket.
- Wear protective clothing and safety glasses when working on the pneumatic system.
- Make sure all guards and guards are installed when you have finished maintenance work.

2.3.6 Safety messages

- This chapter lists the general safety messages. Specific safety messages, where potential hazards may arise if the procedures or instructions are not followed, are included in the appropriate sections of this manual.

2.3.7 Compressed air quality prescription

Lubrication

The cylinders have been designed for use with unlubricated air, in which case no maintenance is required. If lubricated air is used, lubrication must be continuous because the additional lubrication removes the lubricant applied at the factory.

Recommended oils: ISO and UNI FD22 (Energol HPL; Spinesso; Mobil DTE; Tellus Oil).

Air

With reference to ISO/DIN 8573-1, the compressed air to use is class 3-4-3, i.e.:

- Solid particle class 3: 10.000 particles/m³ with d≤5 micron.
- Humidity class 4: Pressure dewpoint ≤ + 3°C.
- Oil class 3: Concentration total oil ≤ 1mg/m³.

Remaining

Max. pressure: 10 bar (valves, cylinders).
 Min. pressure: 2.5 bar (valves).
 Supply pipe: Ø8 to Ø12 mm.
 Pipe between articles: Ø6 to Ø8 mm.



Warning! Be sure that the flow regulator and end cushioning not completely turned out. These parts are regulating the in-and outgoing speed of the cylinder. When the speed is too high, the cylinder can break. Correct adjustment can be found in relevant installation and user instruction.



Warning! Make sure the cylinder is never mounted under radial forces. The cylinder can handle only axial forces on the piston rod.

3. Installation and Operating Instructions

General description

Hanskamp's T'port closing gate is a pneumatic gate developed specifically to close off feed stations in low barns when cows enter the station for their portion of concentrate. The T'port closing gate must be connected in parallel to the feed motors of all feed types. These installation instructions will guide you through the installation of the T'port closing gate (figure 1). Always read these instructions in their entirety and observe all safety rules. Visit www.hanskamp.com for installation examples.

Part numbers and names for several components can be found in the appendix.

Transport and storage

The T'port will be shipped on a pallet. This pallet is completely sealed and the corners are covered with tape to prevent damage. The T'port closing gate is also stored this way.



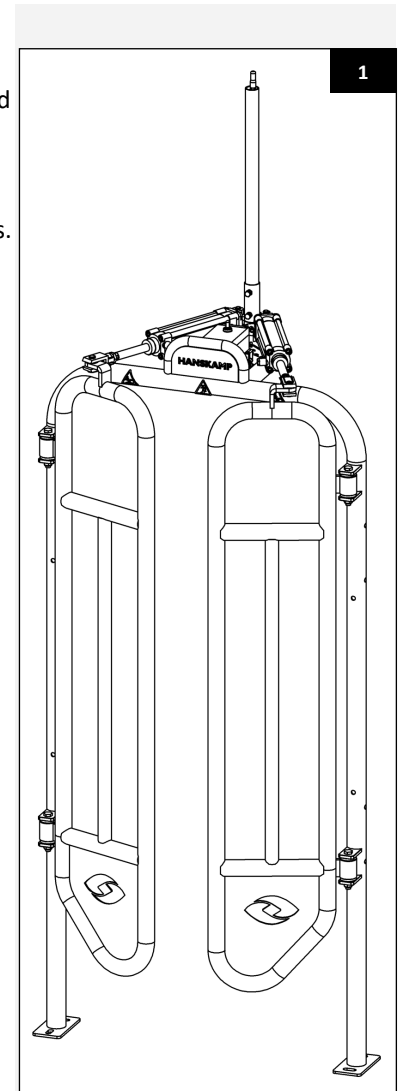
Please note! Always use an appropriate vehicle (forklift truck, pallet fork, pump truck, etc.) to move the pallet.



Please note! Parts may fall off the pallet when it is being unpacked.



Please note! The T'port installation must be protected against weather influences. Hanskamp advises not to install the installation outside.

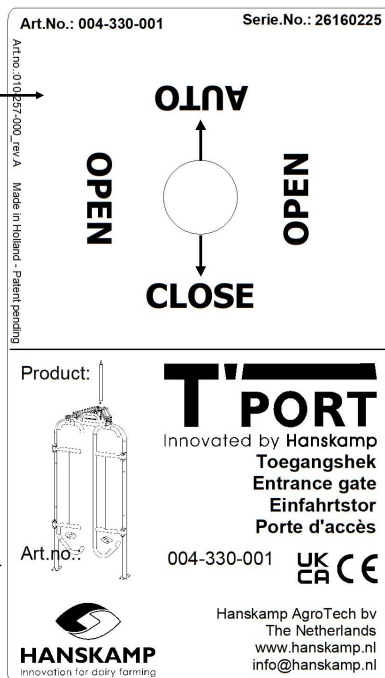


Type designation, can be found on the control box

Function
description
control switch

Product
description

Item number



UKCA/CE
marking

Contact details

The pallet includes:

1. 1x art. no. 004-330-001
T'port
2. 1x art. no. 004-339-000
Mounting hardware
3. 1x art. no. 004-334-000
Cable tube Ø33.7

Safety stickers

The user and installer are solely responsible for the safe operation and maintenance of the T'port closing gate. Safety stickers are used to ensure safety in and around the T'port closing gate. These stickers should be placed in a correct manner. Information about which sticker should be attached where can be found further on in these instructions for installation and use (for example fig. 2).

Applying the stickers

- Make sure the surface is dry and clean.
- Make sure the surface temperature is at least 5 °C.
- Find the right position for the sticker.
- Remove a small portion of the foil on the back.
- Place the sticker on the surface and press a small portion of the self-adhesive layer onto the surface.
- Carefully remove the foil and press down the rest of the sticker.
- Remove any air bubbles with a needle and use the foil to smoothen the sticker.

Maintaining stickers

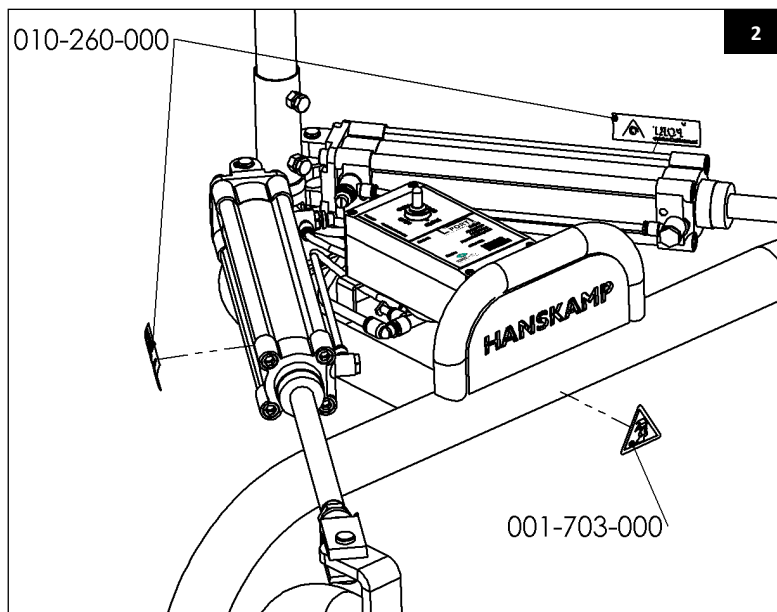
- Keep safety stickers clean and legible.
- Clean safety stickers with soap and water.
- Do not use solvents or abrasives that could damage safety stickers.
- Replace missing or illegible safety stickers.

Safety stickers are available from Hanskamp. Always use the product numbers in correspondence.



001-703-000 Warning sticker
Attach the provided stickers on the T'port frame. See figure 2.

T'PORT
Innovated by Hanskamp
Art.no.:004-333-000 Cylinder



010-260-000 Warning sticker
Attach the provided stickers on the cylinder on the piston rod side. See figure 2.

Assembly

1. Check that all components are present according to the parts list.



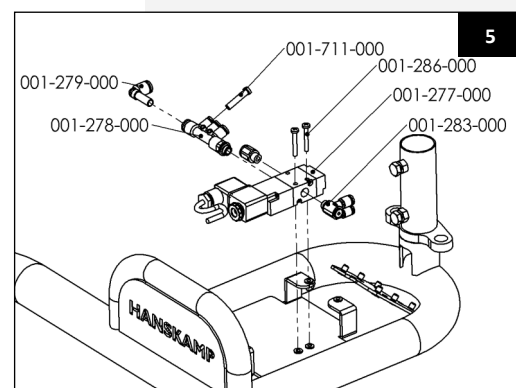
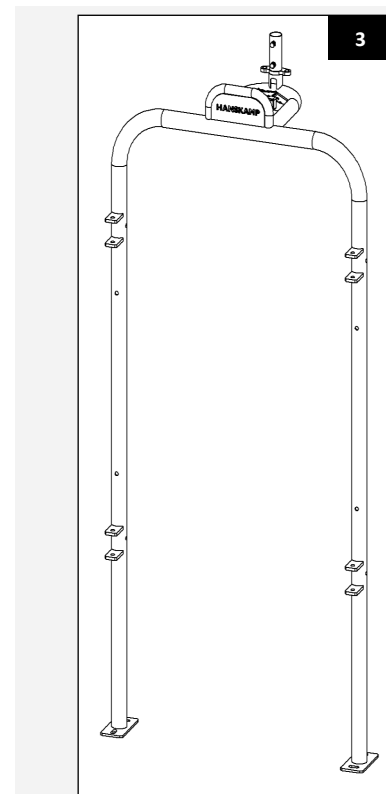
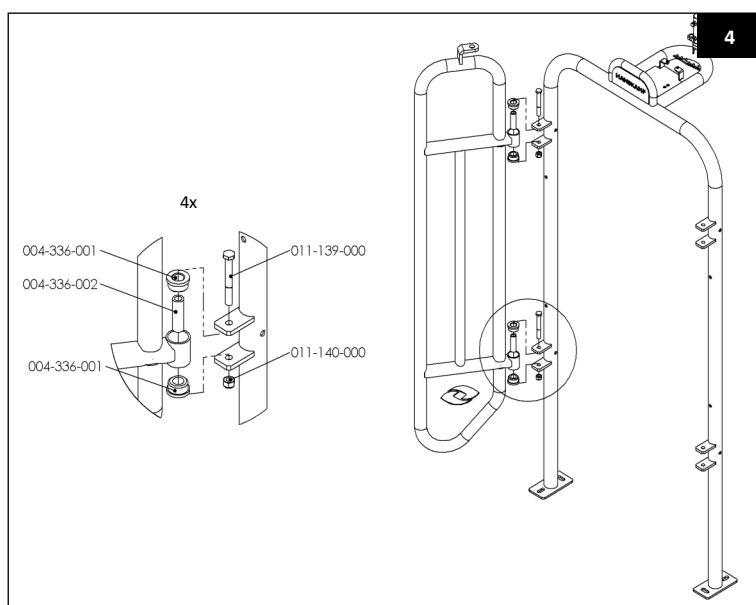
Caution! No fastening material is supplied to attach the T'port closing gate to the feed station and the ground is not included.

2. Place the frame (art. no. 004-332-000) behind the feed station, making sure there is enough space in the feed station that the T'port will not bother the cows when closed. See appendix for dimensions.
3. Attach the frame to the grates and the feed station (mounting hardware not provided).
4. Mount the 2 gates to the frame with the bushings as illustrated in figure 4.

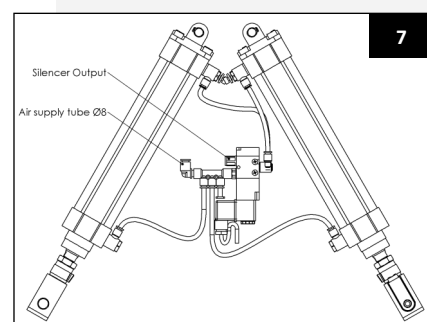
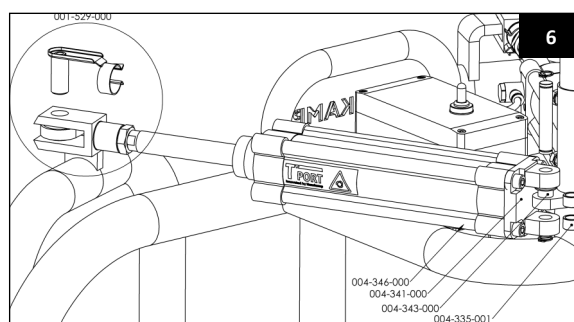


Caution! Make sure that the gates (art. no. 004-331-000) have sufficient freedom of movement behind the station and that they do not block the cows' path when the T'port is open.

5. Mount the valve to the frame using the provided couplings (figure 5).



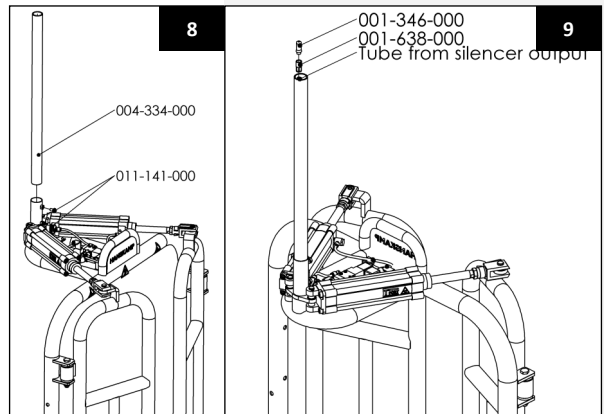
6. Mount the cylinder, making sure that the gates close properly when the cylinder is fully retracted. This can be adjusted by rotating the fork. Lock it in place of using the underlying nut (figure 6).
7. Connect the cylinders with the valve using Ø6 PU air tube (art. no. 001-388-000) (figure 7).





Caution! Make sure that the air tube is long enough to avoid it getting pinched.

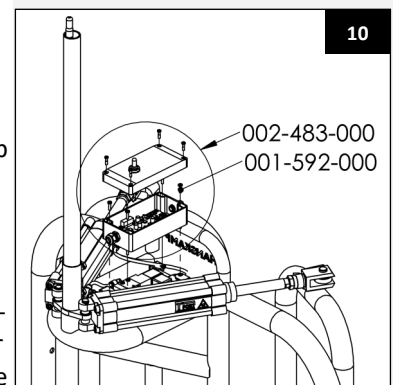
8. Mount the cable conduit (art. no. 004-334-000) to the frame and fasten it with two bolts (art. no. 011-141-000) (figure 8).
9. Run two Ø8 air tubes (art. no. 001-823-000) through the cable conduit to the valve. Connect one tube to the "air supply" output and the other to the "silencer output" (figure 7).
10. Attach the air tube connected to the "silencer output" to the silencer (art. no. 001-638-000) (figure 9) and fasten it to the top of the cable conduit.



Caution! Install the air tube out of reach of the cows. Only use properly conditioned air (clean and dry). Make sure that there is no air pressure on the air tube when attaching the cylinder.

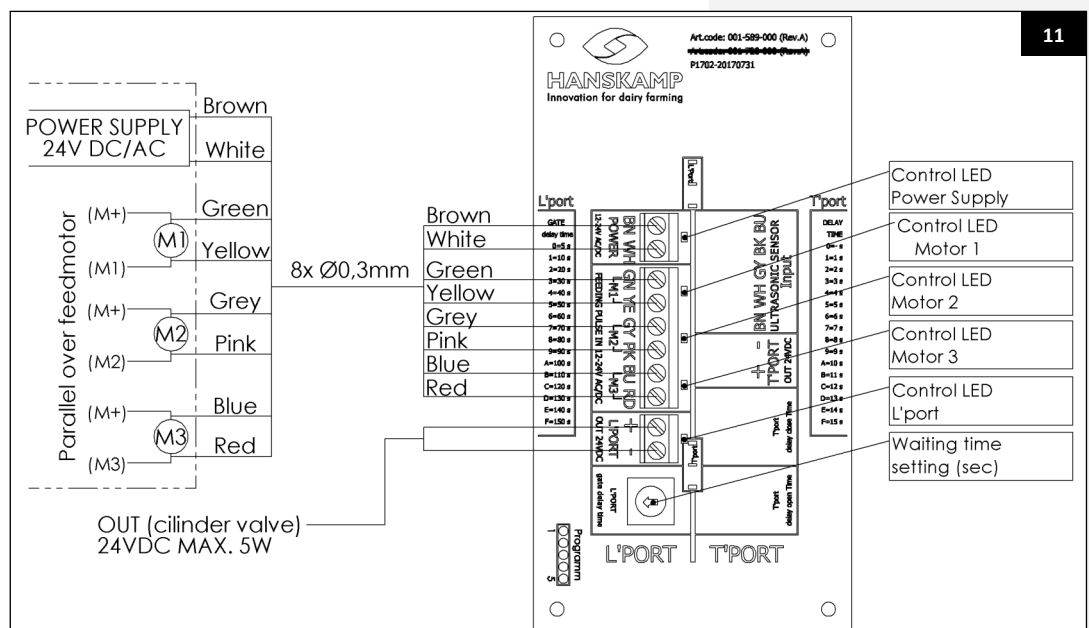
11. Make sure that all air tubes lie flat between the lips of the mounting plate on the frame. Attach the control box to the frame using the 4 bolts provided (art. no. 001-592-000) (figure 10).
12. Connect the air supply to the Ø8 "air supply" air tube. Run the Ø8 air tube to the top through the cable conduit (art. no. 004-334-000) and install a T-coupling on top (art. no. 001-294-000) to loop the air supply in case of installing multiple T'ports. Recommended air pressure: 6 bar. The length of the supply tube is max. 75 m. See www.hanskamp.com for compressed air requirements.
13. **Electrical connection**

The supplied cable (art. no. 001-593-000) (fig. 12.a) should be connected in accordance with the diagram (fig. 11). The T'port PCB needs to be supplied with 24VAC or 24VDC. The maximum consumption is 5 Watt. The IN1, IN2 and IN3 ports should be wired parallel over the motors of the feed kinds. The ports work on 12-24VAC/DC. The power supply and inputs are kept separate galvanically on the print. In case of a power breakdown the T'port entrance gate opens automatically. If there is no 24 Volts available, then order art. no. 002-812-000 Hanskamp PowerUnit 10A 24V DC.



Please note! Cable to be installed out of cow's reach.

Please note! Make sure to disconnect the power supply before the T'port is connected. Avoid sudden movements from happening.



Operation

With the 3-Position Switch (fig. 12.C) a choice can be made to open the T'port (Open), to close the T'port (Close) or to have the T'port operate automatically (Auto). In position 'Automatically', the T'port will close when the feed motor receives an electrical pulse. The T'port will open after a delay time. The delay time will automatically reset when the feed motor has received a new electrical pulse. This delay time can be set via the 14-positions switch on the T'port Control PCB (time setting in sec.) (fig. 11). The delay time has to be bigger than the total interval time of the used feed kinds. Recommendation: interval time + 25 seconds.

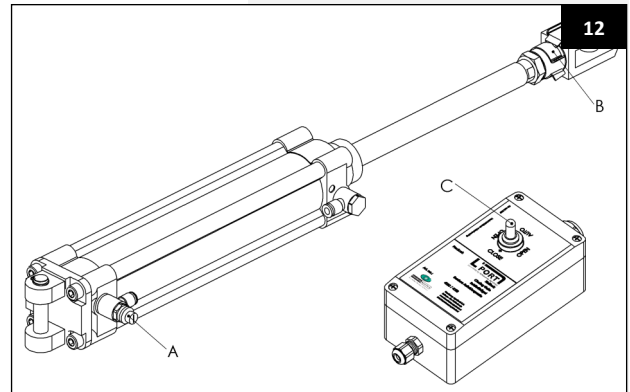
Meaning

With the brands of DeLaval, Fullwood, Insentec, Hokofarm and GM time has to be set 40 seconds (pos. 4). With Nedap VC control: add the interval time of the used feed kinds + 25 seconds. So, with one feed kind 40 seconds (pos. 4), with two feed kinds 60 seconds (pos. 6) etc.

Explanation position-switch delay time

Time setting in sec.

0 = 05 sec.	A = 100 sec.
1 = 10 sec.	B = 110 sec.
2 = 20 sec.	C = 120 sec.
3 = 30 sec.	D = 130 sec.
4 = 40 sec.	E = 140 sec.
5 = 50 sec.	F = 150 sec.
6 = 60 sec.	
7 = 70 sec.	
8 = 80 sec.	
9 = 90 sec.	



Adjustment

1. Adjust the length of the cylinder-rod to the fork (fig. 12.B) so that the fences are always completely closed.
2. With the 'Speed in' adjusting possibility, that is indicated on the lid with 'Speed in' (fig. 12.A), it is possible to set the ingoing speed of the cylinder-rod. Be sure that the T'port moves in ± 5 sec. from open to close position.



Please note! When the above adjustment steps are not observed correctly, this may reduce the durability of the T'port drastically.

Start-up

After installation the T'port can be put in operation, by placing the switch (fig. 12.C) to 'Auto'. The sound level always equals 70 dB(A) or less.



Caution

Attention! Danger of getting jammed.
Attention! T'port closing gate starts automatically.
Attention! Risk of impact from the T'port closing gate when walking in.



Importantt! Make sure that the person who operates the T'port, is always standing on a safe place. When the T'port is in operation, no persons should be near the T'port. It is not allowed to climb the T'port when in use.

Maintenance

Check the T'port closing gate on a daily basis on faults and wear out. Do this by means of a test on the output of the feed motors and through the manual switch on the cylinder (fig. 12.C). Make sure that the vibrations and noises caused by the T'port are reduced as much as possible. (For example by mounting grease nipple and lubricate the moving parts.)



Please note! In case of maintenance make sure to always first switch off the air pressure and the voltage to the feeding station.

Disassembly

In case of disassembly all parts should be separated on material type and should be processed in the right type of waste management system.



Please note! When dismantling the T'port, always first switch off the air pressure and voltage to the feeding station.

Overview of changes included in these installation and operating instructions

No.	Release date	Chapter(s)	Comments
1	08/2016		First release
1.1	03/2018	All	Inserted figures of new PCB
1.2	01/2023	Page 7 + 14	UKCA logo added
1.3	06/2024	Page 7	Warning added: Attention! The T'port installation must be protected against weather influences. Hanskamp advises not to install the installation outside.
1.4	11/2024	Page 2	Type numbers added to model designation table
1.5	12/2025	Pages 1 + 18	Page 1 Change of place name. Page 18 Change of address Hanskamp.

Warranty Limitations

Costs and expenses resulting from the following are excluded from the warranty:

- Using the equipment improperly, in violation of the specifications in the installation and operating instructions;
- The consequences of any intervention by mechanics other than mechanics approved by Hanskamp for carrying out certain work;
- Incidents such as freezing, ice, fire, flood, flooding or any other problems caused by excessive water, and lightning;
- Defective electrical system or earthing;
- Damage to the electrical system caused by pests and the like;
- Using compressed air improperly, in violation of the compressed air instructions drawn up by Hanskamp in collaboration with suppliers, which causes a defect in the pneumatic systems. These compressed air regulations can be consulted at www.hanskamp.com.

The warranty does not apply to consequential damages unrelated to the machine itself. All systems have been tested, However, in the event of defects, Hanskamp AgroTech BV cannot be held responsible for consequential damage.

4. FAQ

Common problem	Possible cause	Solution
Installation completed, gate doesn't open, the valve switches.	Speed controllers are completely closed down.	Turn the flow-micro regulators open (fig. 12.A).
T'port doesn't close, there is no LED light visible / several lights are lit on the PCB.	<ul style="list-style-type: none"> - Signal cable is incorrectly connected. - No power on PCB. - Not the correct power has been supplied. - Cable is broken. 	<ul style="list-style-type: none"> - Review or signal cable is properly connected (see page 10). - Check the connection and power supply. - Check that the PCB is connected to 24 AC or DC. (At 12 volts the gate will not work) See page 10. - Connect the cable and remove the old one.
Gate opens right after a feed portion is dispensed.	Waiting time is incorrect set.	Set waiting time properly (see page 11).

Copyright and disclaimer

The information in this publication is for informational purposes only, and is not intended as a sales quote. The products offered may differ from the images. Any brand or product references in this manual are for identification purposes only. The company and product names mentioned in this manual are trademarks. No part of this publication may be reproduced or made public without the prior written consent of Hanskamp AgroTech BV. Although this publication has been compiled with the greatest care, Hanskamp AgroTech BV is not liable for any damage that may arise due to any errors or omissions it might contain. The Dutch installation and operating instructions are the original installation and operating instructions. Translations into other languages are based on the Dutch installation and operating instructions as a source document. Hanskamp AgroTech BV accepts no liability for differences between the translations. If there are any doubts about the content and accuracy of the translated installation and operating instructions, the Dutch installation and operating instructions shall prevail.

Declaration of incorporation of complete machines IIA

According to Annex IIA of the Machinery Directive 2006/42/EC, for completed machines

We,
Hanskamp AgroTech BV
Broekstraat 17
7009 ZB Doetinchem
The Netherlands,

Authorised compiler(s) of the technical file:

H.J. Hanskamp,

declare under our sole responsibility that the following product:

T'port 004-330-000 (24VAC & 24VDC),
Universal closing gate to close off feed stations,

to which this declaration relates, complies with the provisions of the following directives:

- Machine Directive 2006/42/EC

The product also complies with the provisions of the following standards:

- NEN-EN-ISO 12100
- NEN-EN-ISO 4414
- NEN-EN-IEC 60204-1
- NEN-EN-IEC 13849-1

If the T'port is not connected and the prescribed safety instructions are not used, this Declaration of Conformity is not applicable and no rights can be derived from this declaration.

Doetinchem, the Netherlands, 01-07-2016

H.J. Hanskamp

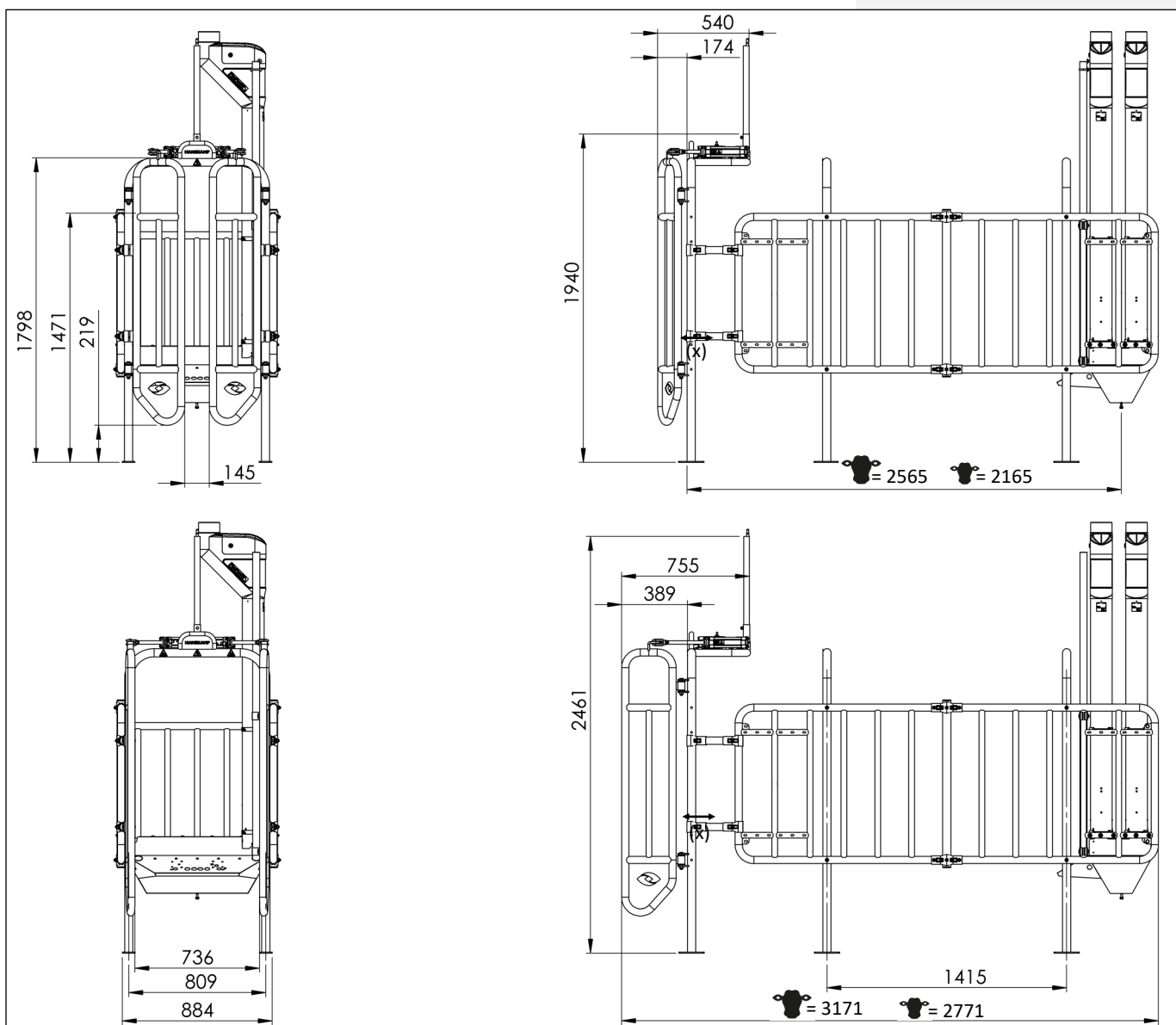


Appendix

Hanskamp can supply the following types of closing gates:

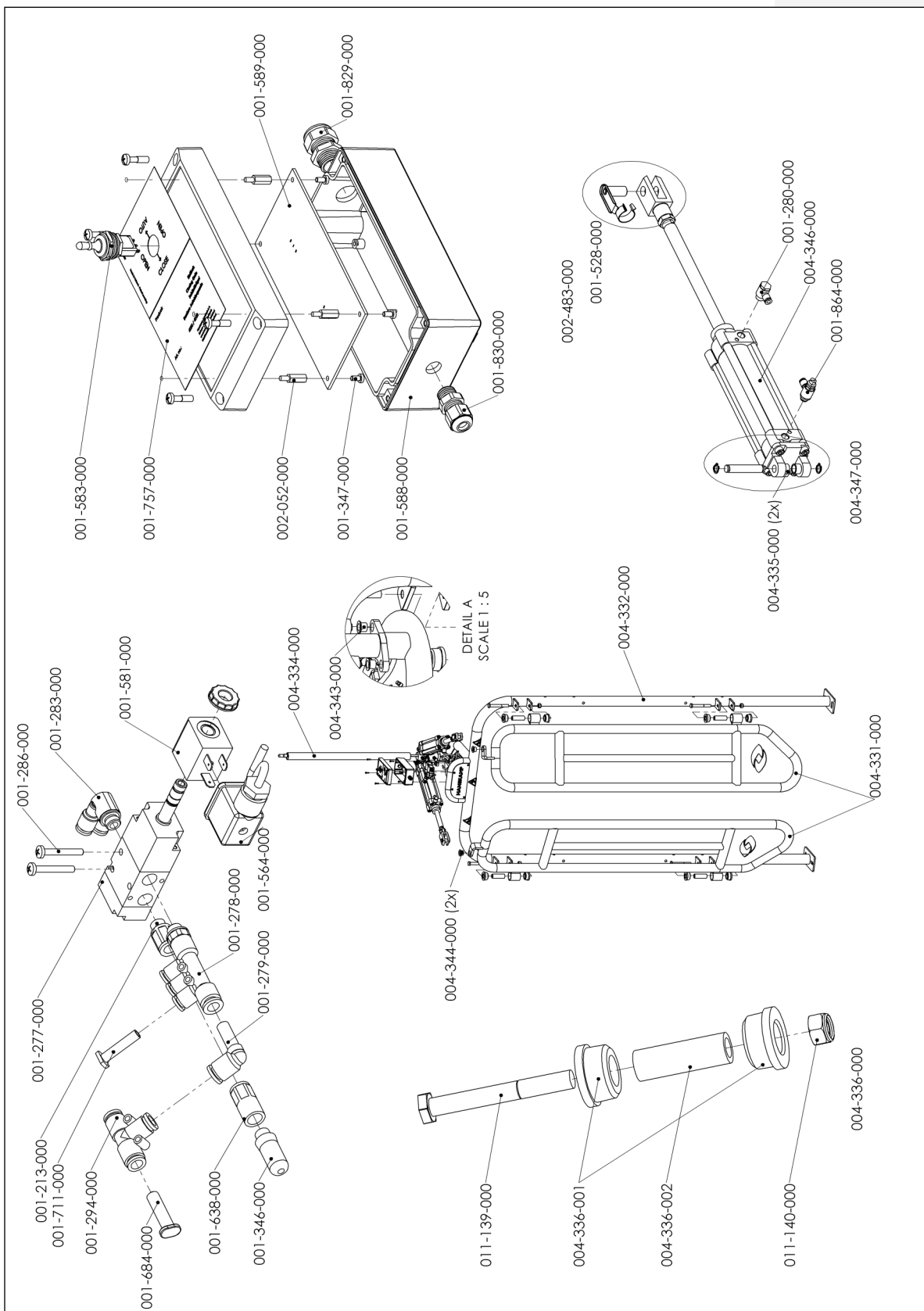
- 4030 L'port closing gate universal, fits on all types of out of parlour feeders.
- 4032 L'port closing gate XL (extended back gate), fits on DeLaval FSC40(0), FP200 & Lely Cosmix S out of parlour feeders.
- 4330 T'port fits on all types of out of parlour feeders.

Dimensions:



Loose components

It is possible to reorder loose components from your supplier for maintenance, or for any other reason. Please use the item numbers as shown on the drawings (exploded views).



004-330-000 T'port			004-347-000 Cylinder T'port		
Art. no.	Description	Quantity	Art. no.	Description	Quantity
002-483-000	Control unit with 3-position switch	1	001-213-000	Push-in fitting 1/8"x8mm	1
004-331-000	T'port fence complete	2	001-277-000	Valve 3/2 1/8" without coil	1
004-332-000	Frame T'port complete	1	001-278-000	Multiple manifold threaded inlet RL45 Ø8x1 Ø6x3 G1/8"	1
004-334-000	Tube for cable 1" l=600	1	001-279-000	L-connector with push-in sleeve RL46 Ø8-Ø8	1
004-336-000	Plain bearings set incl. M12 bolt and nut	4	001-280-000	Single rotary ring push-in RL54 Ø6 1/4"	2
004-347-000	Cylinder T'port back	1	001-283-000	Double rotary ring push-in plastic RL25 Ø6 1/8"	1
004-339-000	Mounting hardware for T'port back	1	001-294-000	T-piece R22 8mm entry	1
002-483-000 Control unit with 3-position switch complete			001-346-000	silencer 1/8"	1
Art. no.	Description	Quantity	001-388-000	Tube 6x3.9 PU/PE /50m	0.031
001-583-000	3-position switch	1	001-528-000	Fork GK M63	2
001-588-000	Box control unit L'port closing gate	1	001-564-000	DIN43650 plug black 2 wire 0.5 mm	1
001-589-000	Control PCB closing gate incl. 3-position switch	1	001-581-000	Coil for valve	1
001-829-000	Cable gland M16x1.5	1	001-638-000	Push-in fitting 1/8" bi x 8mm	1
001-830-000	Cable gland M12x1.5	1	001-684-000	Plug Ø8	1
010-125-000	Sticker on connection block	1	001-711-000	Plug, RL9T Ø6	1
010-126-000	Sticker on connection block (power)	1	001-823-000	Tube 8x5 5 PU/PE. / 50m	0.036
010-257-000	Sticker T'port Back 004-330-001 with CE-mark	1	001-864-000	Flow-micro regulator type C 6-1/8"	2
004-339-000 Mounting hardware for T'port back (FS-WI)			004-346-000	Cylinder Ø50	2
Art. no.	description	Qty	004-341-000	Rear hinge cylinder Ø50	1
001-286-000	Screw M4x30 DIN7985 ev	2	Art. no.	Description	Quantity
001-702-000	Sticker Warning hand entrapment	2	004-349-000	Parallel bracket double clamp 1½"x1¼" M10x60 bolt and nut	4
001-592-000	screw M4x16 A2	4			
004-242-000	Blind rivet nut M4 0.3-3.0 mm 8.8 ev	6			
004-335-000	Nylon spacer 12x16x10	4			
004-343-000	Slide bearing for cylinder T'port rear hinge	2			
004-344-000	Slide bearing for cylinder T'port	2			
011-141-000	Hexagon head setscrew M8x12	2			

Hanskamp AgroTech BV
Xenonstraat 6
7031 HX Wehl
The Netherlands
Tel: +31 (0)314 - 393 797
www.hanskamp.com

Also take a look at:

